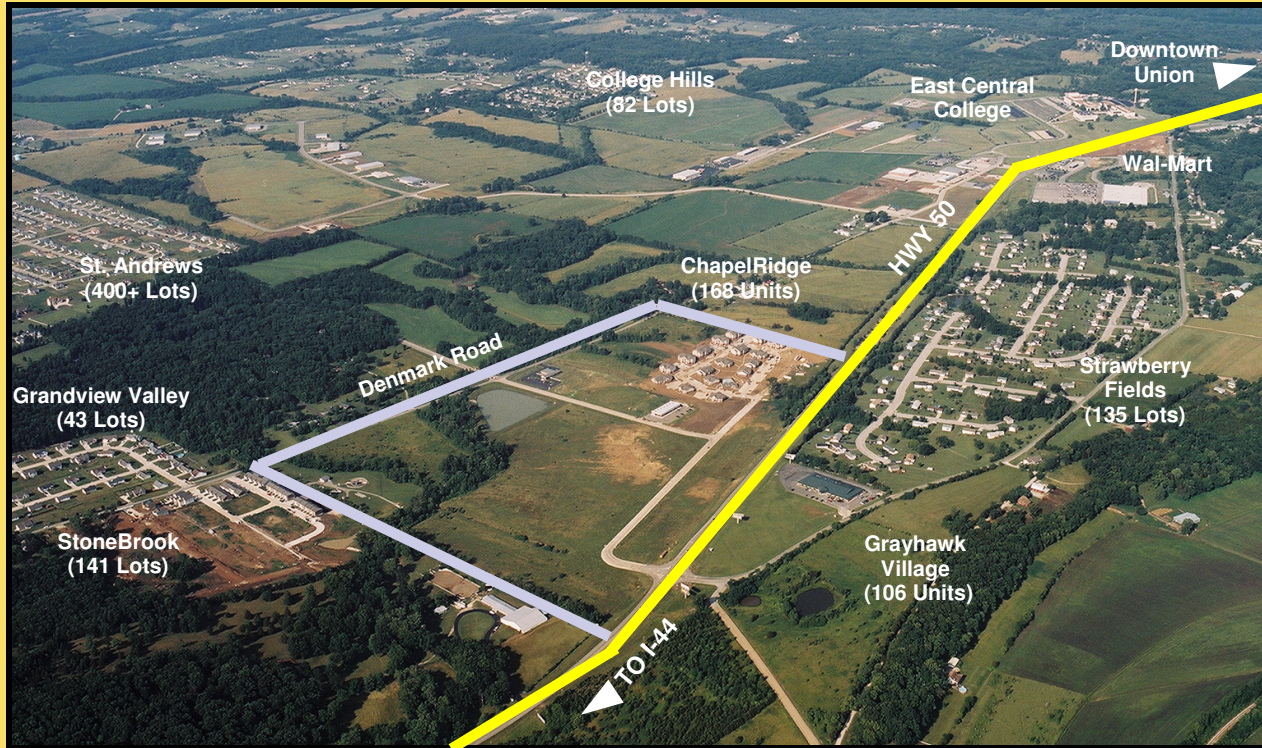


Union Marketplace

Union, Missouri

"The Possibilities Are Endless"



- ◆ MoDOT Approved Signalized Intersection at South Outer 50 and US Highway 50
- ◆ US Highway 50 Scheduled to be Widened to 5 Lanes in 2009
- ◆ Over 27 Consecutive Years of Retail Sales Growth
- ◆ Pro-Business Attitude Within City Government, Quick and Uncomplicated Permitting Process
- ◆ Numerous New Homes Under Construction (Over 500 New Homes Platted)
- ◆ Home to East Central College With Over 4,000 Students and Faculty
- ◆ Trade Area Population from 2000-2007 has Increased 24%

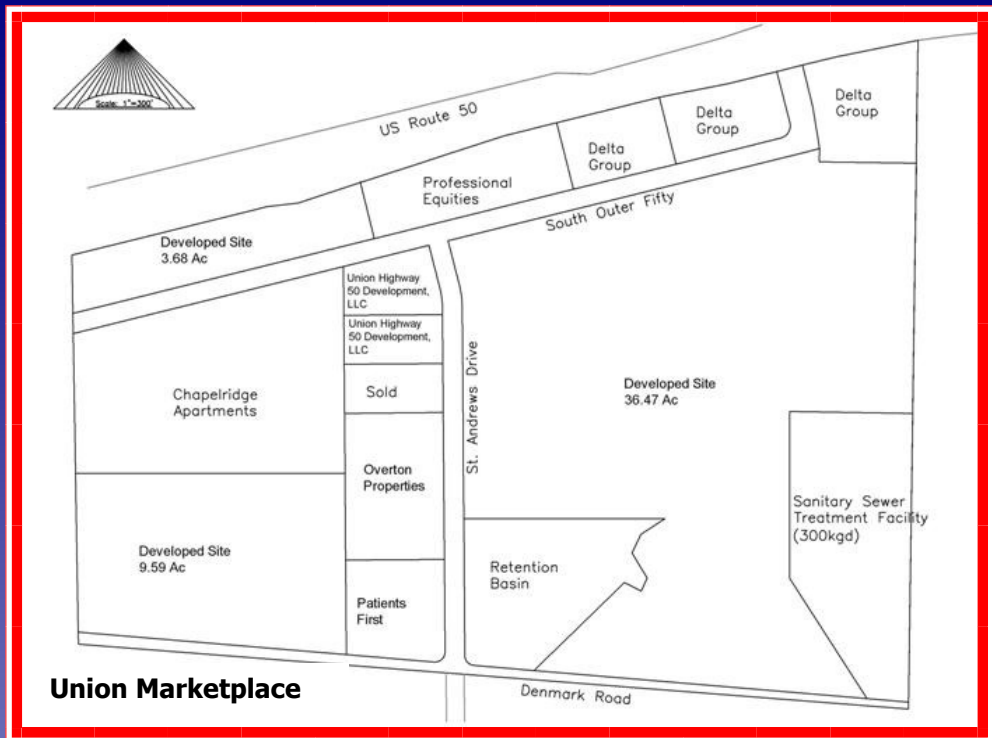


500 E. Locust Street
Union, MO 63084
Phone: 636-583-3600
Cell: 314-808-3395
E-mail: development@ci.union.mo.us
Website: www.ci.union.mo.us
and/or www.unionmoed.com

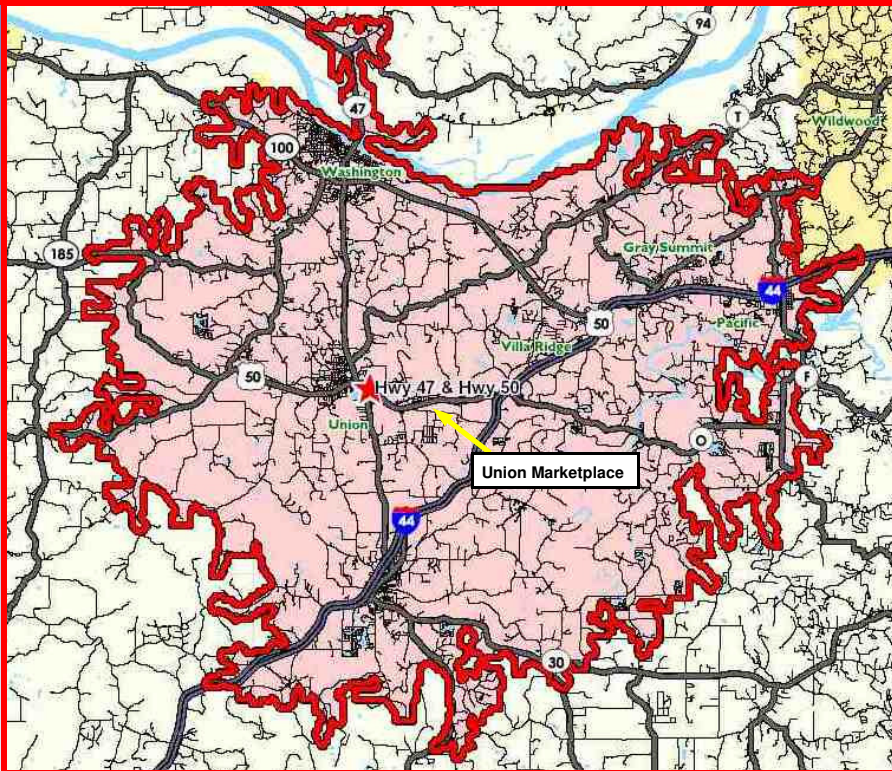
Contact: Joseph A. Graves
City of Union
Economic Development Director

Union Marketplace Union, MO

- \$1 BIL + Estimated Retail Potential
- Prime Highway Location
- 20,000+/- Vehicles Per Day
- Located in Rapidly Growing Residential Area



Union, MO 15 Minute Trade Area



Population	15min Drive Time
5 Year Projection	82,066
Current Year	77,876
2000 Census	62,867
Growth 2000-CY	24%
Households	
5 Year Projection	30,469
Current Year	28,717
2000 Census	23,525
Growth 2000-CY	22%
Income	
Current Year Average Household	\$60,116
Current Year Median Household	\$51,249
Current Year Per Capita	\$23,630
Est. Retail Sales Potential	\$1,148,437,820

Joseph A. Graves
City of Union
Economic Development

500 E. Locust Street
Union, MO 63084
Phone: 636-583-3600
Cell: 314-808-3395

development@ci.union.mo.us
www.ci.union.mo.us
www.unionmoed.com